

Manual Quick Changer for Collaborative Robots – QC75



#8094
EOAT-Side



#8093
Robot-Side

- **Suggested payload: 22 lb (10 kg)**
- Handles both pneumatic and electrical end effectors.
- Four integrated G1/8" pneumatic pass-through ports for streamlined pneumatic routing.
- Locked position sensing available.
- Optional electrical connector provides 16 screw terminals for streamlined wiring. See page 170 for equipment to assist in wiring.
- Cobot industry standard ISO-9409-1-50-4-M6 mounting pattern.

*The Quick Changer standard
for collaborative robots!*

TMPlug&Play
CERTIFIED

Quick#	Part#	Description	Weight	Price
8093	QC75-A	Robot-Side - For Cobots (75mm)	300g	\$402.00
8094	QC75-B	EOAT-Side - For Cobots (75mm)	260g	\$256.00
8095	CMAQC	Robot-Side Electrical Connector	18g	\$36.87
8096	CMBQC	EOAT-Side Electrical Connector	18.5g	\$86.89
8097	CSAQC	Robot-Side Locked Position Sensor Only	15g	\$30.77

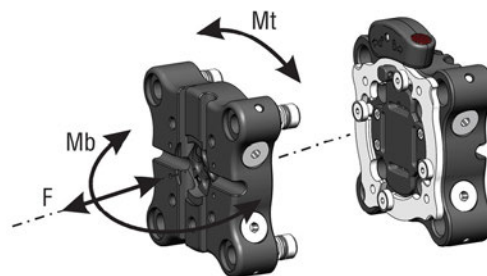
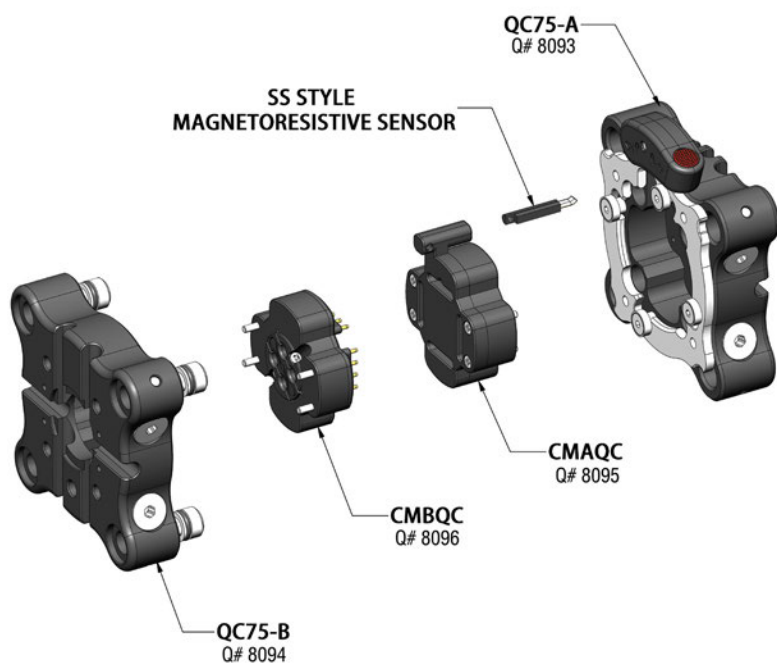


Designed for collaborative robots, the QC75 is a manual quick changer that allows for pneumatic and electrical connections to be easily coupled between jobs. Standardize up to 16 electrical contacts and 4 pneumatic lines to have your cobot up and running with minimal downtime.



With the same mounting pattern as the tool flange of your cobot (ISO-9409-1-50-4-M6), you can mount any "Plug & Play" end effector to the QC75-B for a quick and repeatable installation for every job. End effectors can be hard-wired to the QC75-B, or plugged to the wrist connector of your Cobot for even faster setup times.

Manual Quick Changer for Collaborative Robots – QC75

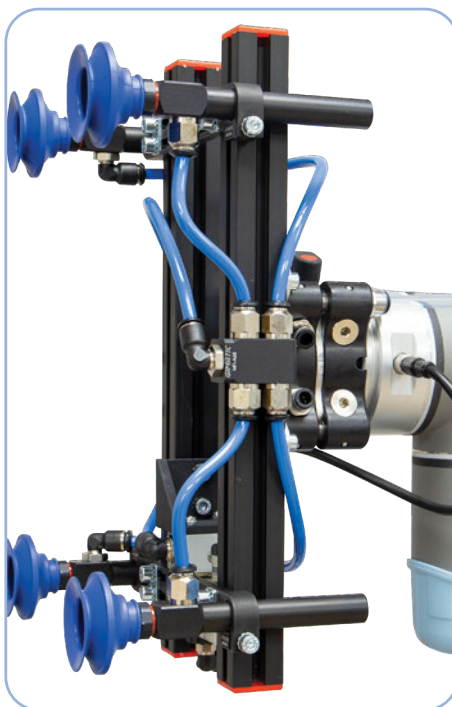


Specifications for Quick Changer QC75		
Weight	Robot-Side	300g
	EOAT-Side	260g
Max. Suggested Payload		22 lb (10 kg)
Maximum Air Pressure		6 bar (87psi)
Air Ports		(4X) G1/8"
Electrical Connector		Optional
Safety Loads:		
F 224 lbs.	Mt 73 ft-lbs.	Mb 36 ft-lbs.

F= Axial Load Limit Mt= Torque Moment Limit
Mb= Bending Moment Limit

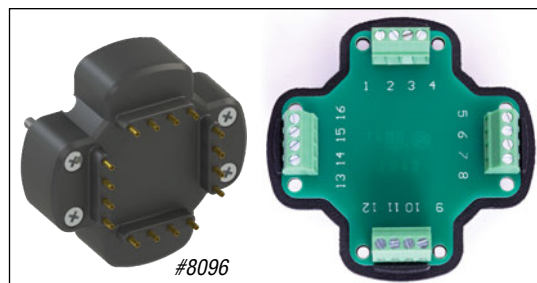
QC75 is a Manual Quick Changer, Ideal for Plug & Play or Custom EOAT

The QC75 was designed for collaborative robots, incorporating configurable electrical connections, innovative pneumatic pass-through ports and locked position confirmation.

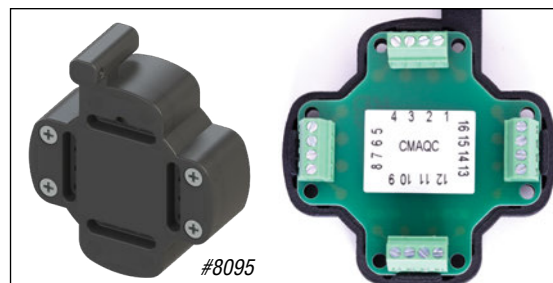


Manual Quick Changer for Collaborative Robots – QC75

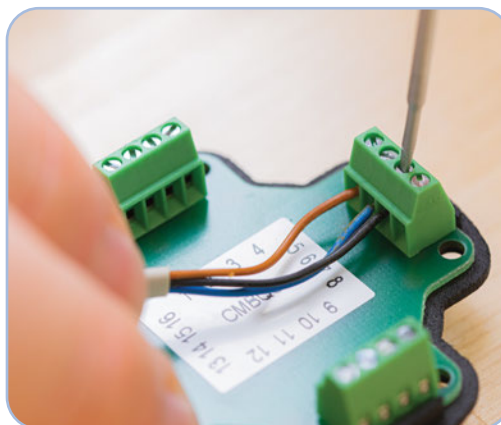
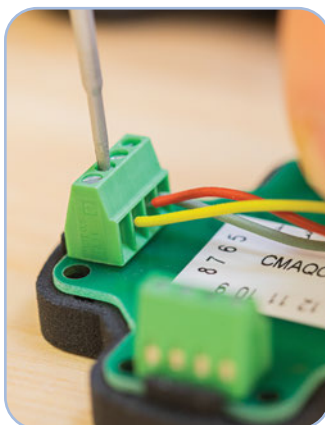
EOAT-Side:



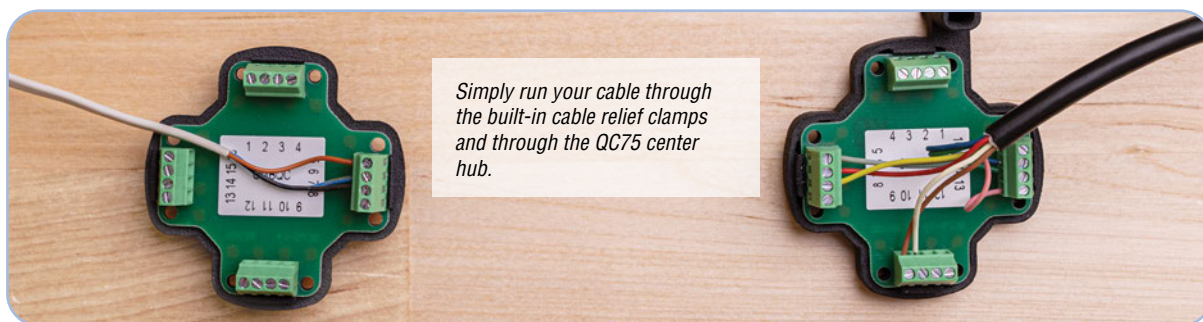
Robot-Side:



QC75 Electrical Connectors make for easy custom wiring of your tool to either your robot wrist I/O or to the controller.



(16x) Screw terminals allow you to standardize on tools with a single sensor or various electric grippers or valves.



Simply run your cable through the built-in cable relief clamps and through the QC75 center hub.

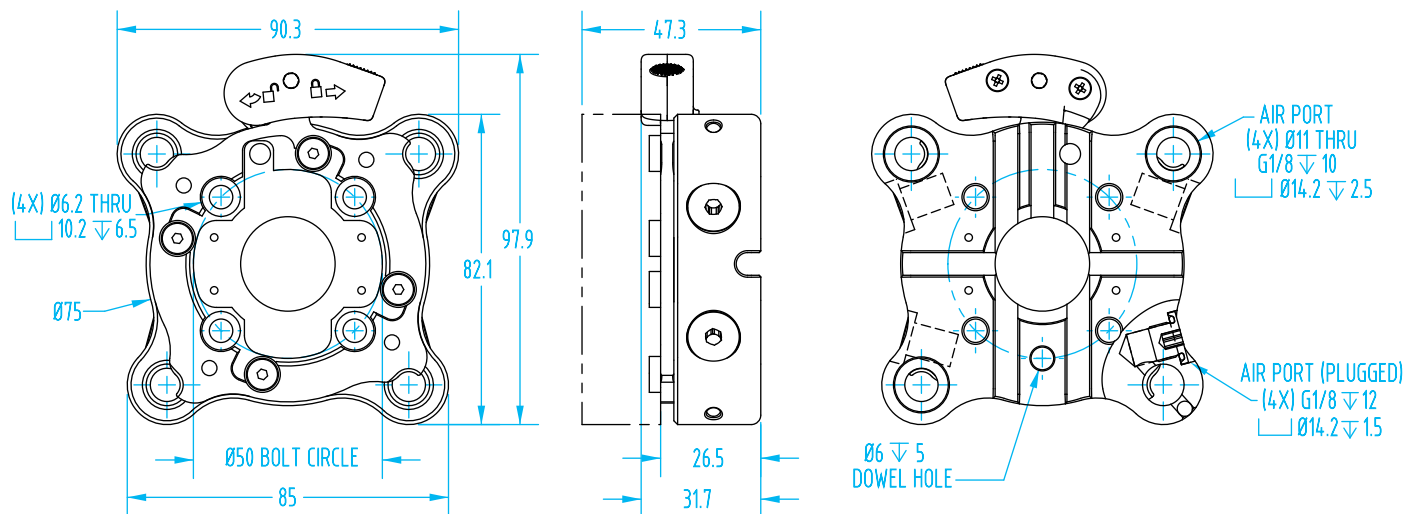


Replace the Electrical Connector back into the QC75 and fasten with same hardware. Note that cables are meant to run down the backside grooves of the QC75 to avoid any cables from pinching.

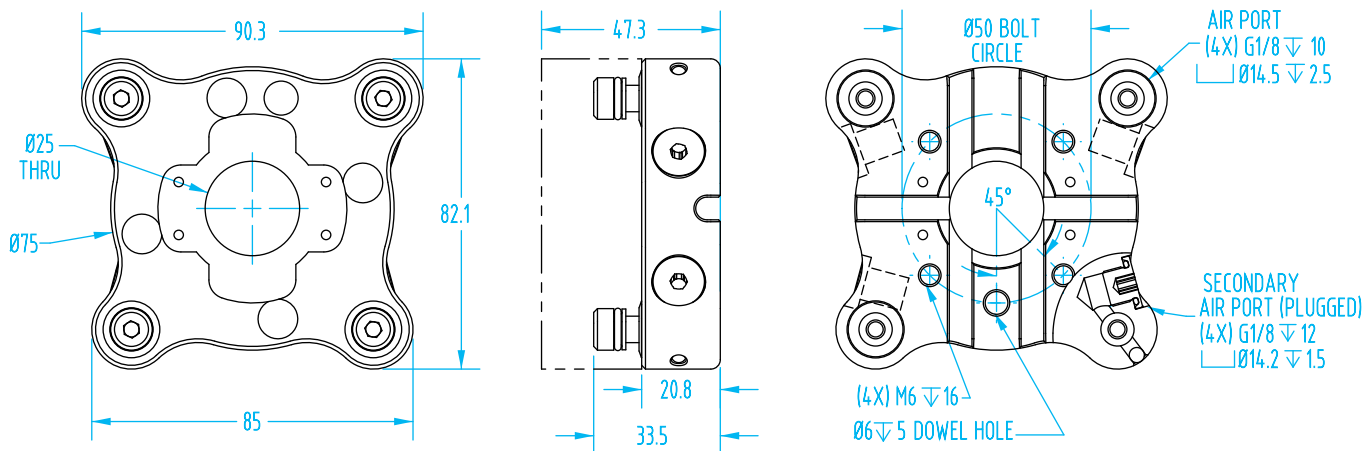
Manual Quick Changer for Collaborative Robots – QC75

(Dimensioned drawings shown half scale)

Robot-Side



EOAT-Side



Mounting:

